

MODEL GS Series

END SUCTION VOLUTE PUMP

MODEL GS, GSD, GSS, GSO

eDYNAMiQ

Eco, Dynamic and Integrated Quality



Eco, Dynamic and Integrated Quality

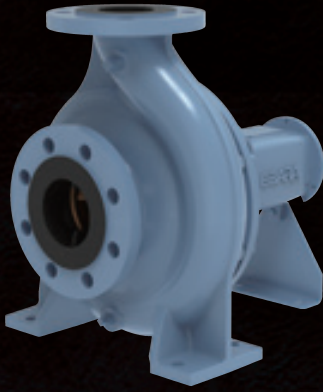
delivering stunning solutions to every application and occasion

MODEL GS series is the global standard model that combines the knowledge and technology which Ebara has brushed up for many years as a comprehensive pump manufacture. These pumps cover the wide range between fresh water to chemical liquid. We also accomplish the reasonable and economical quality, backed by the Founding Sprits, "Passion and Dedication".

We delivery stunning solutions to every application and occasion.

[illegible]

MODEL GS



Applicable standard: EN733

Capacities: to 1300m³/hr (50Hz), to 1500m³/hr (60Hz)

Heads: to 150m

Temperature: -10°C to 140°C

Features:

- World Top class pump efficiency achieved. (GS is classified as MEI \geq 0.7 or 0.6)
- Higher efficiency means lower energy consumption and motor output, and more compact size.
- Back pull-out structure enables disassembly and inspection without removal of suction and discharge piping.

MODEL GSD



Applicable standard: EN733

Capacities: to 700m³/hr

Heads: to 150m

Temperature: -10°C to 120°C

Features:

- Centering alignment is not required with close coupled design.
- World Top class pump efficiency achieved. (MEI \geq 0.7 or 0.6)
- Back pull-out structure enables disassembly and inspection without removal of suction and discharge piping.

MODEL GSS



Applicable standard: EN733

Capacities: to 1200m³/hr (50Hz), to 870m³/hr (60Hz)

Heads: to 150m

Temperature: -25°C to 140°

Features:

- Stainless steel type that can handle more kinds of liquids.
- World Top class pump efficiency achieved.
- Back pull-out structure enables disassembly and inspection without removal of suction and discharge piping.

MODEL GSO



Applicable standard: ISO2858, ISO5199

Capacities: to 1400m³/hr (50Hz, 60Hz)

Heads: to 150m (50Hz), to 140m (60Hz)

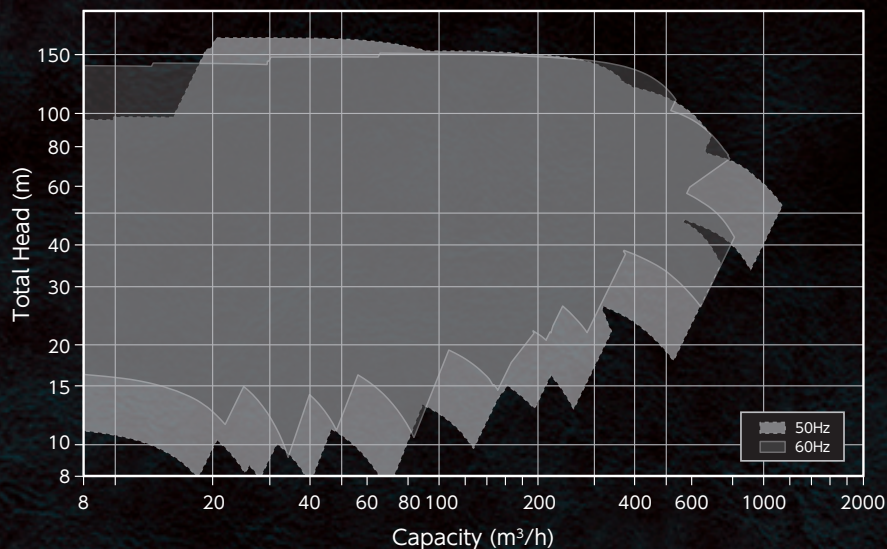
Temperature: -30°C to 200°C

Features:

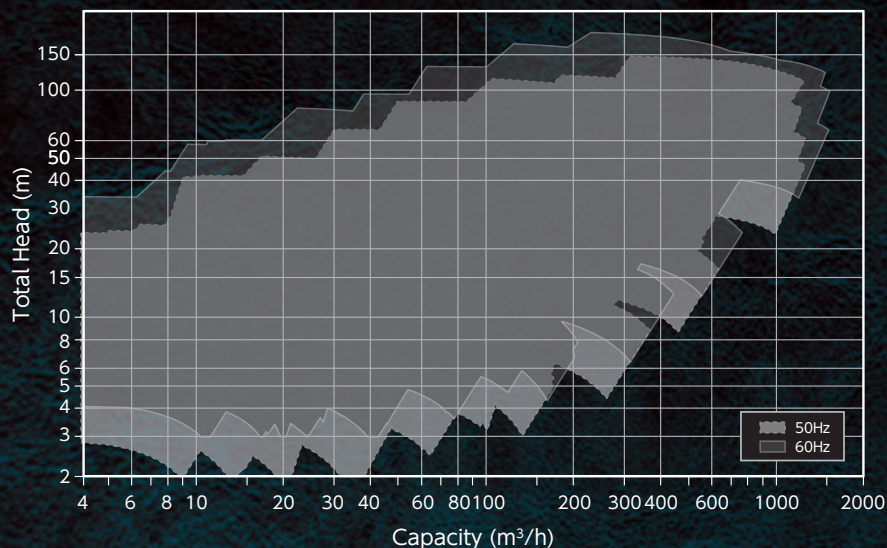
- Impeller with unique reverse open shape for both clean liquid and light slurry liquid provides less axial thrust load and low seal box pressure.
- Heavy duty design to reduce vibration and shaft deflection.
- Gland cover compatible with various shaft seal types.
- Minimized maintenance cost and stock parts by high interchangeability of parts.

Selection chart

50Hz/60Hz 2Pole



50Hz/60Hz 4Pole



MODEL GS, GSD, GSS

Model selection available on EBARA Pump Selector:
" ezFinder.ebara.com/ "



MODEL GSO

Contact us by e-mail

" inq-industrial@ebara.com "



Before use this product and technology, the contents should be confirmed, complied and revised in accordance with the laws and regulations of the country.
(i.e. export control laws and regulations etc.)

- ※1 "MODEL ●●" in this catalog is our model code
- ※2 All specifications subject to change without notice



EBARA CORPORATION

11-1, Haneda Asahi-cho, Ota-ku, Tokyo, 144-8510, Japan

<https://www.ebara.co.jp/en/index.html>

26-103-E01